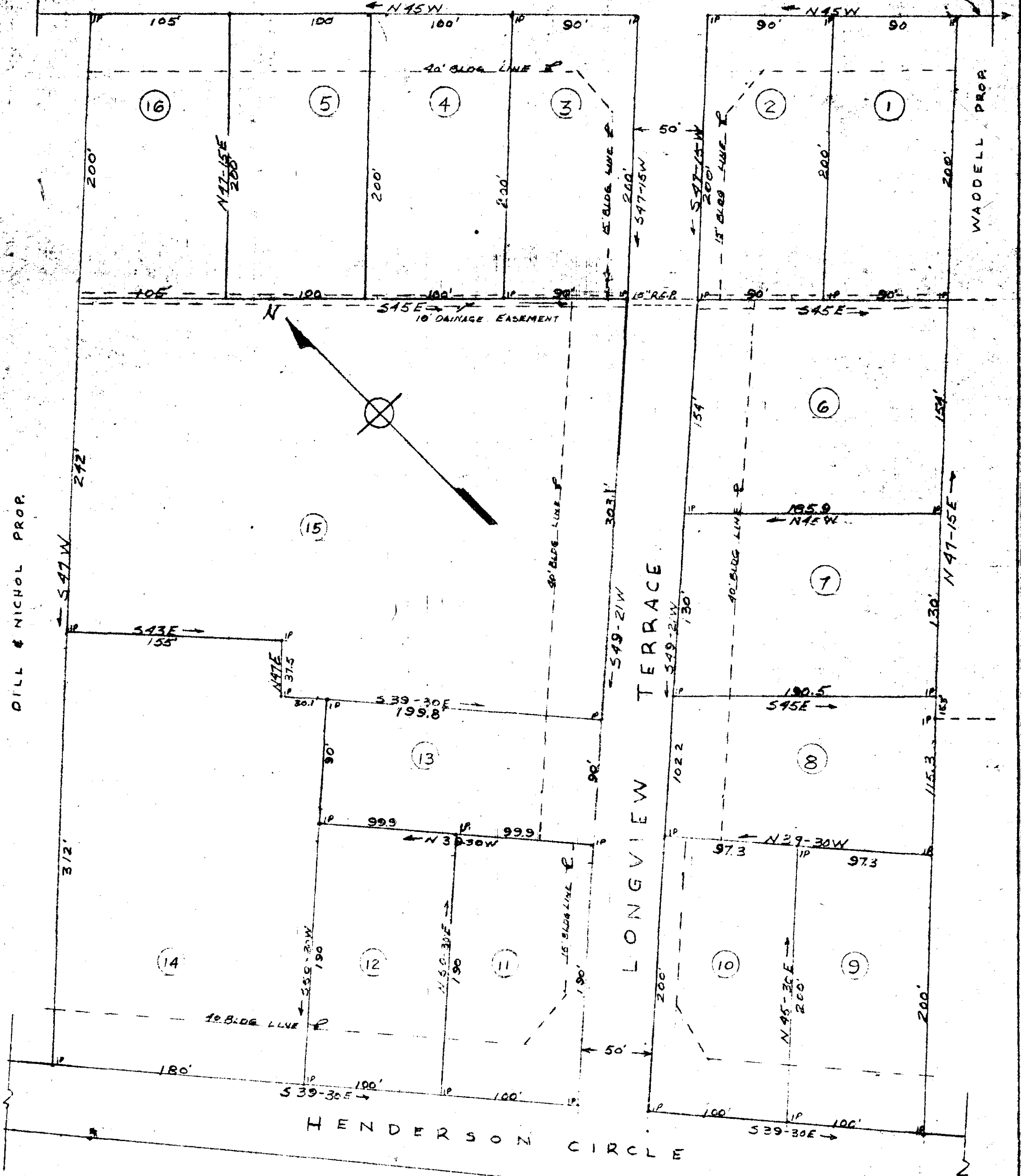


HENDERSON CIRCLE

2215 1/2 HAMMETT'S BRIDGE ROAD



SUBDIVISION OF  
 ADDIE W. LONG PROPERTY  
 CHICK SPRINGS TOWNSHIP GREENVILLE COUNTY  
 SCALE 1" = 60' DEC. 18, 1963

I certify that on December 18, 1963 I surveyed the property shown on this plat; lying about one mile southwest of City of Greer near Hammett's Bridge Road and that all corners and distances are as shown; the same as recorded in Plat Book "Y" page 47 R.M.C. Office, Greenville County and surveyed by H. L. Dunahoo August 23, 1950.

*Madison H. Woodward*  
 Madison H. Woodward REISC 490

22313 FEB 7 1964

FFF-25

FILED  
 FEB 7 4 45 PM 1964  
 GREENVILLE CO. S.C.  
 R.M.C.

GALWAY AND TERRELL  
 REVISED 1-23-64

Filed This 7 day of Feb 19 64  
 And Recorded in Vol. FFF Page 25 at  
 Register Mesne Conveyance Greenville County, S. C.